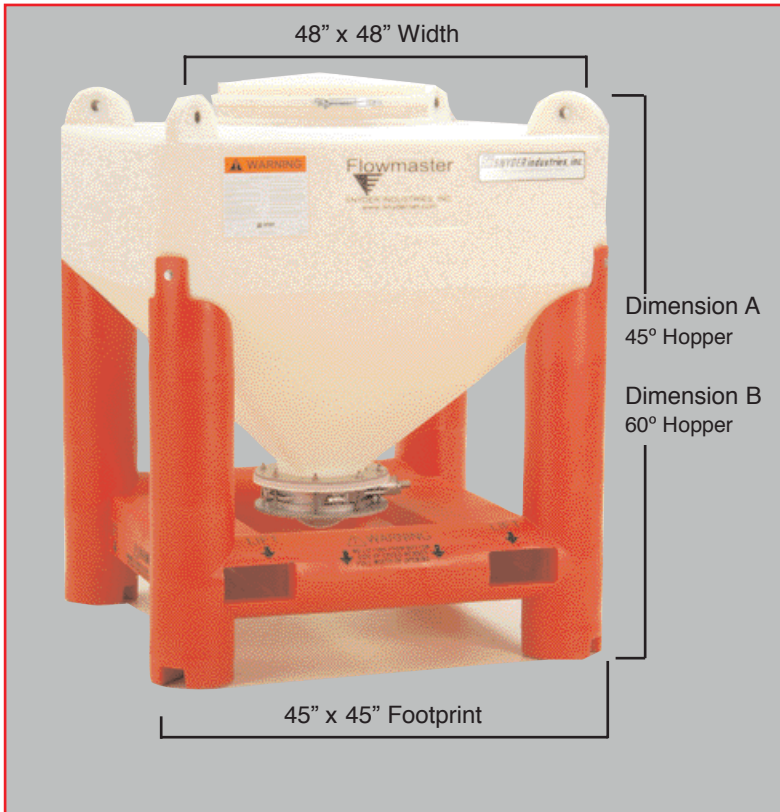


Flowmaster



Sanitary Hopper Bins

Ideal for Food and Pharmaceutical Applications

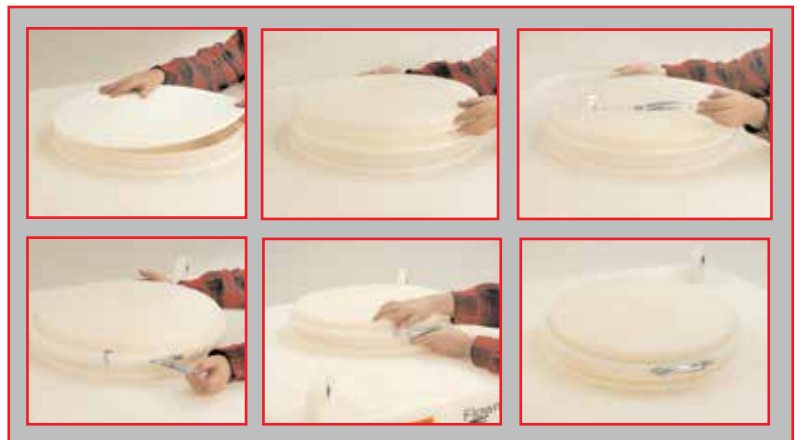


- All Plastic HDPE construction.
- Complies with applicable FDA, NSF, and USDA standards.
- Seamless, smooth interior surface provides excellent flow characteristics and is easy to clean.
- Large, non-threaded 22" opening for container access.
- HDPE cover with lever lock clamp ring design and full food grade gasket.
- Translucent bin enables users to monitor material usage through the tank wall without ancillary equipment.
- Unique sanitary seamless discharge bottom outlet is compatible with a variety of sanitary valves.
- Ideal for food and pharmaceutical applications.
- Sizes available are 25, 40, 50, 60, and 80 cubic feet in both 45° and 60° hopper bottoms.

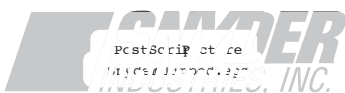
Bin Size	Dimension A	Bin Size	Dimension B
25 C.F.	56.25"	30 C.F.	70.50"
40 C.F.	68.75"	48 C.F.	83"
50 C.F.	77.25"	58 C.F.	91.50"
60 C.F.	86"	68 C.F.	100.25"
80 C.F.	102"	-	-

Bin capacities are based on water-filled capacity

Other custom sizes, hopper angles and dimensions are available upon request



Snyder's unique sanitary lid offers a simple, lever-lock clamp ring design that is ideal for food and pharmaceutical applications.



For more information call 1-888-422-8683
email: sales@snydernet.com
or visit www.snydernet.com