

Ultrasonic Level Indicator

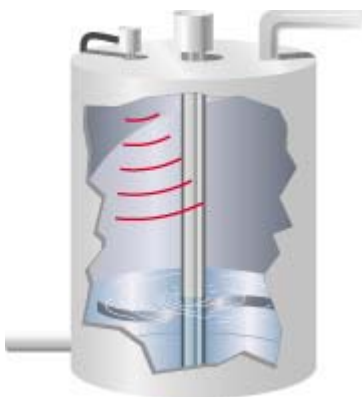
Snyder's Ultrasonic Level Indicator allows a simple and reliable non-contact level measurement of fluids in a vertical single wall or double wall polyethylene tank.

Ultrasonic sensors transmit pulsed waves of high frequency sound. If the sound wave meets a reflective object, such as liquid, it bounces back toward the sensor. The sensor records the information and calculates the distance to the object.

Snyder's Ultrasonic Level Indicator system provides a visual display of liquid level in tank showing gallonage in measurements of hundreds of gallons along with 4-20 mA output for other alarm or control systems as well as four independent contacts capable of handling 10 amps each. Each contact can be programmed to operate in different opening and closing methods (7 modes). Contacts can be used to controls pumps, valves, alarms, etc.

Features

- Provides switch, controller and transmitter capabilities.
- All plastic construction with NEMA 4X rating.
- Replacement of multi-point float, conductivity and pressure switches.
- Range: 20 foot
- Dead band: 12 inches
- Signal output: 4-20 mA
- Supply voltage: 110 or 220 VAC and 24 VDC
- Contact amperage: 10 amps
- Number of contacts: 4
- Connection: 2" NPT standard
- Accuracy: 0.25% of range (with no temperature gradient)



Benefits

- Easy to install
- Self-contained sensor is virtually maintenance free
- Internal temperature compensation
- Provides visual level, switch, controller and transmitter capabilities
- Replacement of multi-point float, conductivity and pressure switches
- Tank inventory monitoring and logistics improvement
- Process control – filling and emptying tanks

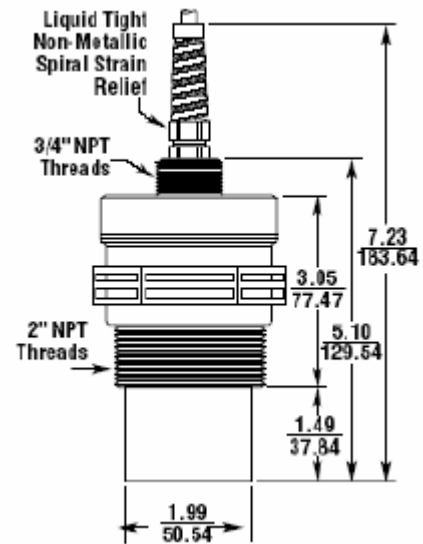


plug-in cord shown in picture is not provided with the system

SENSOR

Application:	wet corrosive
Operating Range:	1 to 25 ft. (0.3 to 7.6 m)
Housing:	PC/PET blend
Transducer Type:	PVDF-faced ceramic
Ratings:	NEMA 4X
Approvals:	CSA/US Class I, Div. 2 (pending)
Operating Temp:	-40 to 140°F (-40 to 60°C)
Temp Compensation	internal
Accuracy (with no temp gradient):	0.25% of range
Beam Pattern:	9° off axis
Cable:	30 ft. (9 m) two conductor shielded standard; RG-6 coaxial or micro connector option

Specifications are subject to change without notice.



MONITOR

Inputs:	DST sensor
Outputs:	4 relays (10 A 110 VAC) and 4-20 mA
Supply Voltage:	24 VDC and 110 or 220 VAC
Total Current Draw:	0.10 A
Housing:	polycarbonate
Ratings:	NEMA 4X, IP65
Response Time:	programmable
Resolution:	0.1 in. (2.5 mm)
Display:	4 character LCD
Adjustments:	programmable keypad
Operating Temp:	-22 to 140°F (-30 to 60°C)
Sample Rate:	programmable (80 m sec. to 10 secs.)
Sensor Connector:	coaxial "F" connector and terminal strip

Specifications are subject to change without notice.



■ Dimensions — in./mm

